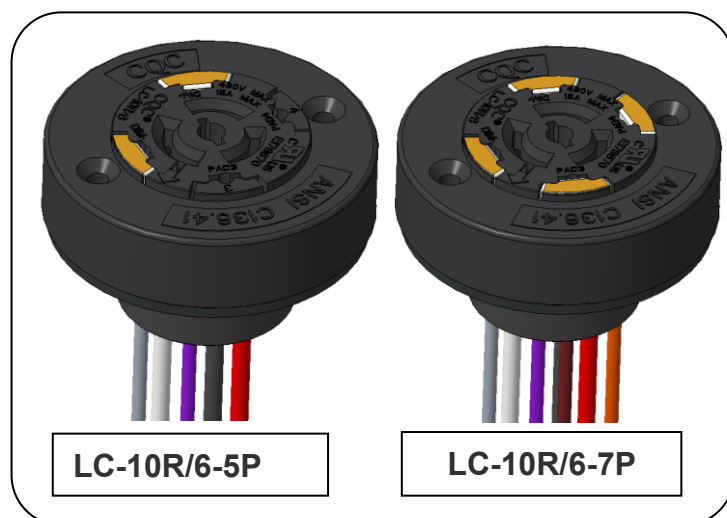


Technical specification of LC-10R/6

Rotatable locking type dimming photocontrol receptacle



The ANSI C136.41 compliant dimming receptacle and contact pads which provide an electrical and mechanical interconnection between an ANSI C136.41-2013 photo control cell and luminaire. It's suitable for outdoor lighting. The ANSI C136.41 compliant dimming receptacle is available with two or four dimming contacts to support either 0-10 VDC dimming methods or Digital Addressable Lighting Interface. Model No.: LC-10R/6

1. Mechanical Properties

- Conform to **ANSI C136.41 – 2013** standard;
- Can provide 5 pin type and 7 pin type products:
LC-10R/6-5P: 3 main wires + 2 dimming/signal wires;
LC-10R/6-7P: 3 main wires + 4 dimming/signal wires;
- Specification of wires:

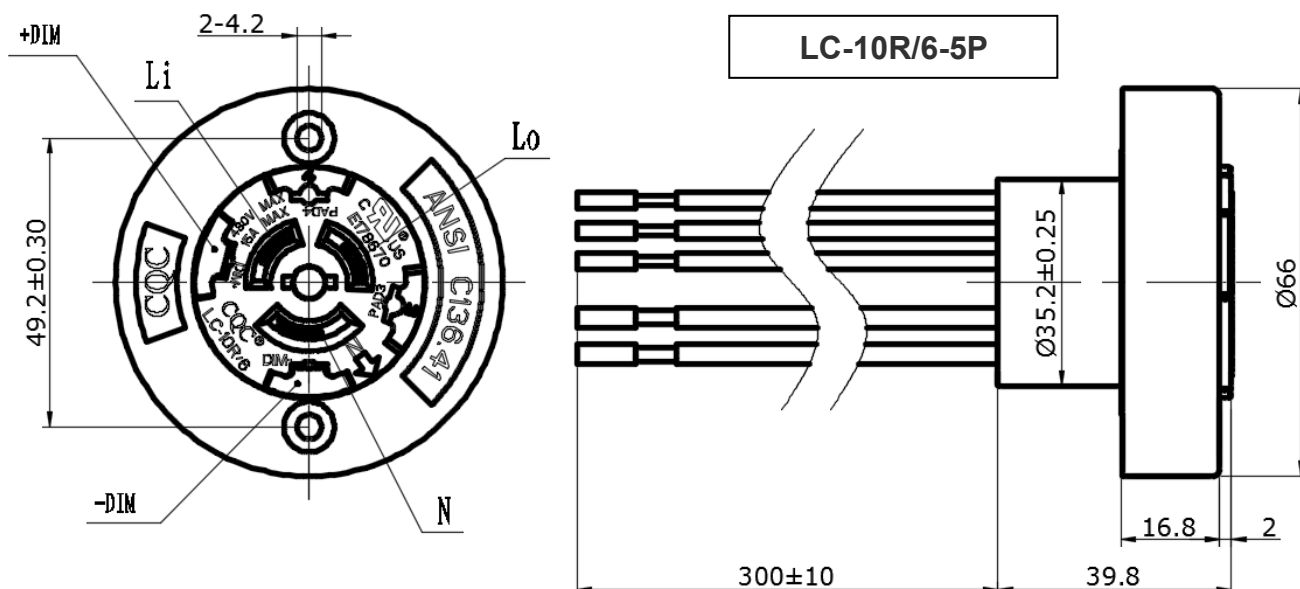
Main wire of receptacle: UL1015, 14 AWG*30cm; signal wire: UL1015, 18 AWG*30cm

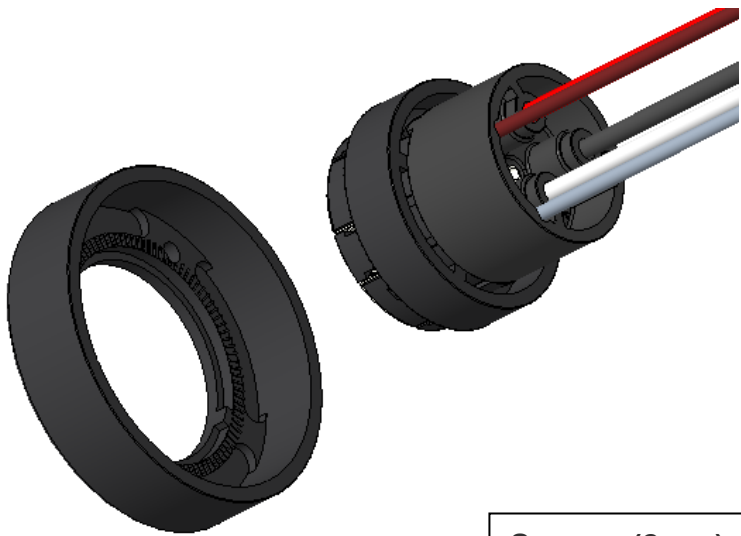
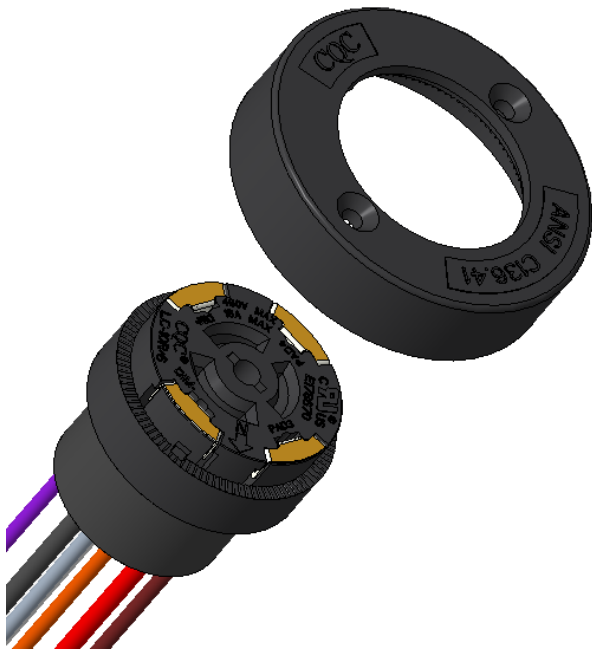
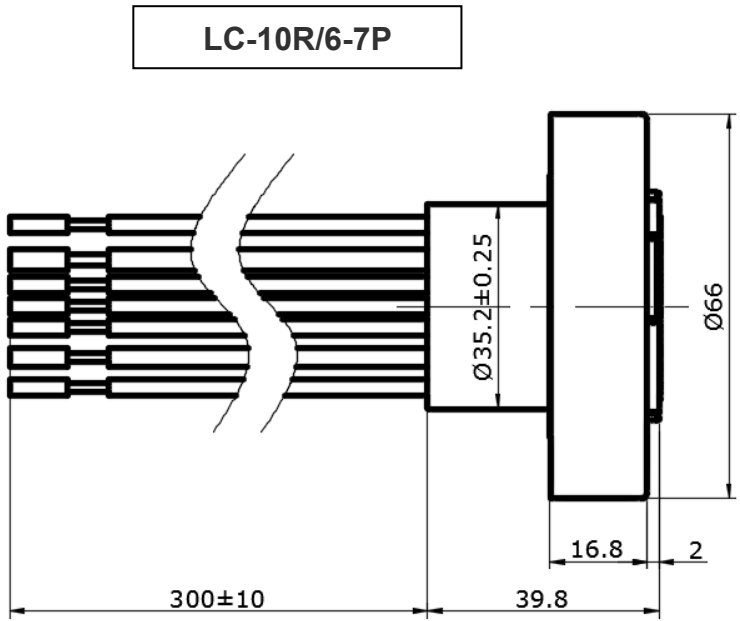
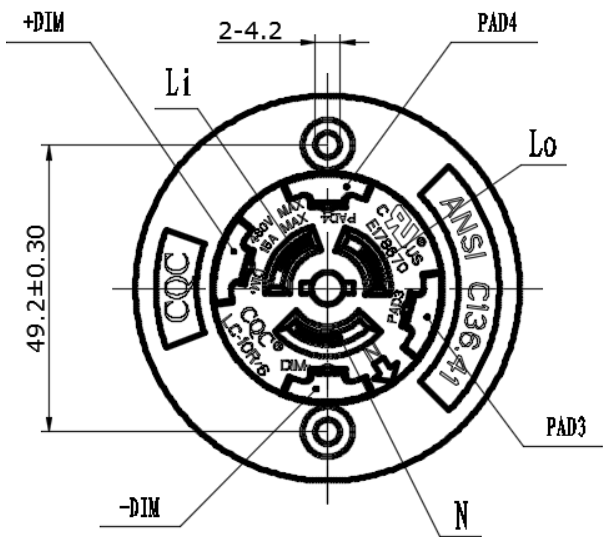


2. Electrical Properties

| | Photocontrol receptacle | Dimming/signal |
|---------------|-------------------------|----------------|
| Rated current | 15 A max | 0.10 A max |
| Rated voltage | 480 VAC/DC | 0-10 VAC/DC |

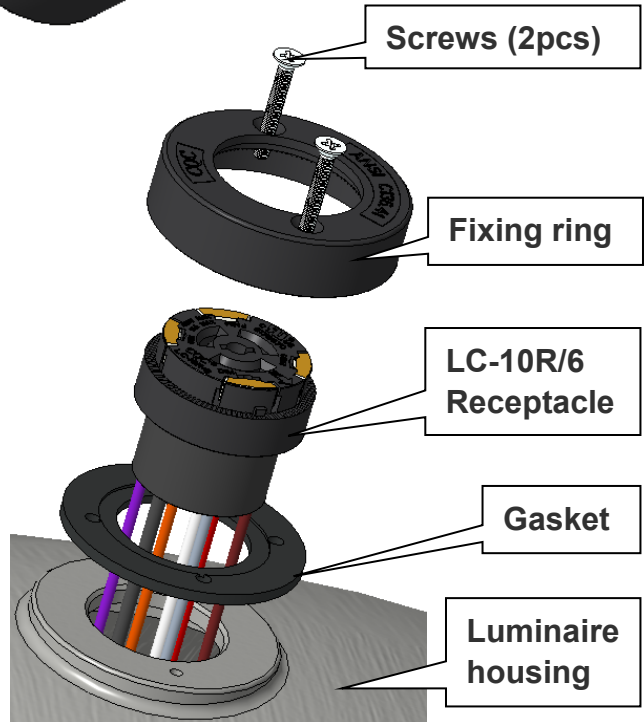
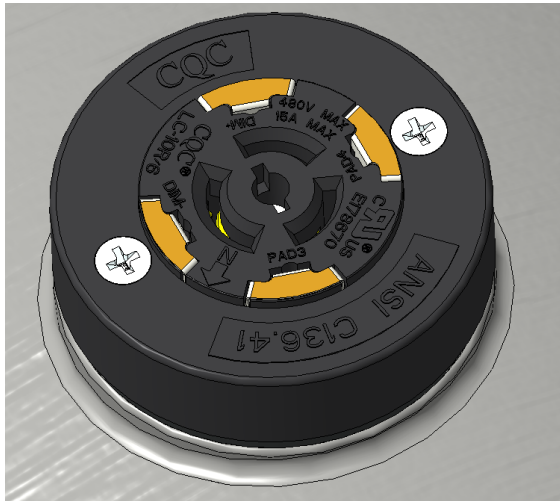
3. Product Appearance





4. Installation

A. Installation Method



B. How to rotate the receptacle and adjust the direction

Steps:

- 1) Loose the two screws (just loose the screws, no need to remove them);
- 2) Plug a slotted screwdriver or similar tool into the slot in the center of the receptacle (as marked in picture 2);
- 3) Rotate the screwdriver to adjust the direction of the N arrow on the product;
- 4) After adjusting the direction of the N arrow, tighten the two screws. Then the adjustment of the direction is completed.

